



DataZen 2022 Installation

The Any to Any Data Replication Engine.

This documentation provides installation and first-time configuration settings.

Pre-Requisites

To successfully install and configure DataZen you will need the following:

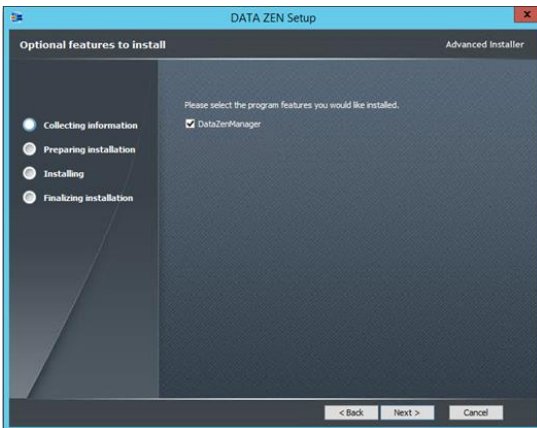
- A windows server running 2016 or higher
- .NET 4.7.2 framework installed
- SQL Server 2016 or higher (express edition is sufficient for most implementations)

Installation

Download the installation Zip file from this location:

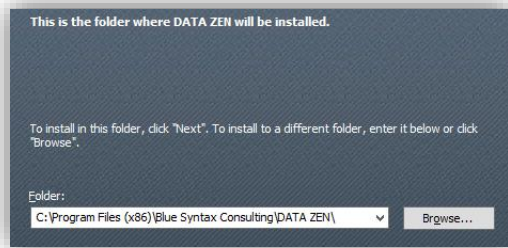
<https://www.enzounified.com/downloads/releases/datazen/datazen-setup.zip>

Once downloaded, extract the **datazen-setup.exe** file to your local machine and run it. Follow the installation prompt.



Select **DataZenManager**; this is the management application allowing you to configure and install DataZen agents.

NOTE: DataZen Agents are installed and configured directly within the manager application.



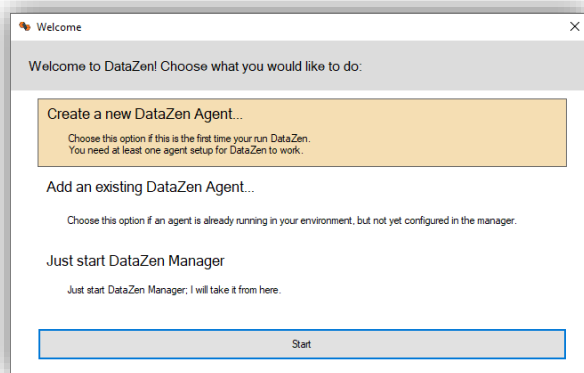
Select where the application will be installed. Click Next, then click Install to begin the installation process.

Before continuing, start DataZen Manager. By default, the installation utility will do this for you; if you start DataZen Manager manually, make sure to run the application as an Administrator.

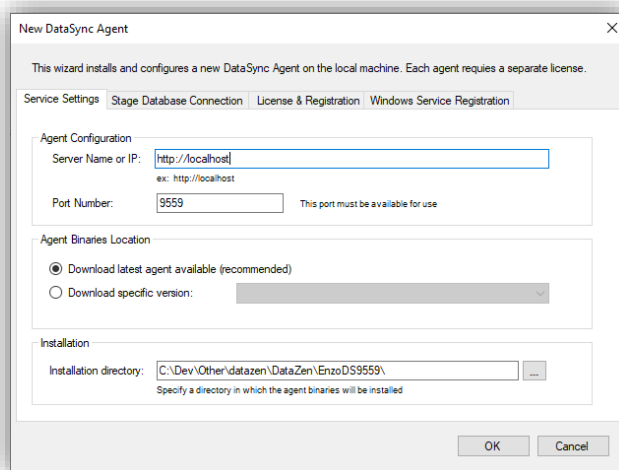
Configuration

Installing and Configuring a New DataZen Agent

The first time you run DataZen Manager there will be no agent configured and a welcome screen will be visible.

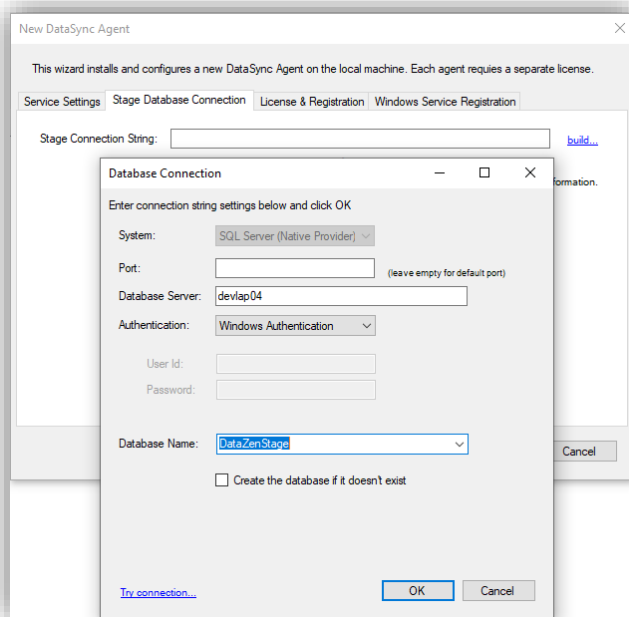


Select **Create a new DataZen Agent**, and click Start. A new window will become visible, allowing you to install and configure an agent on the same machine where DataZen Manager has been installed.



The Service Settings tab allows you to specify how the service will start and which port it will use.

Server Name or IP: The URL DataZen Manager will use to connect to the agent
Port Number: The TCP Port the agent will bind to
Agent Binary Location: The version of the agent to install
Installation Directory: the path where the agent binaries will be installed



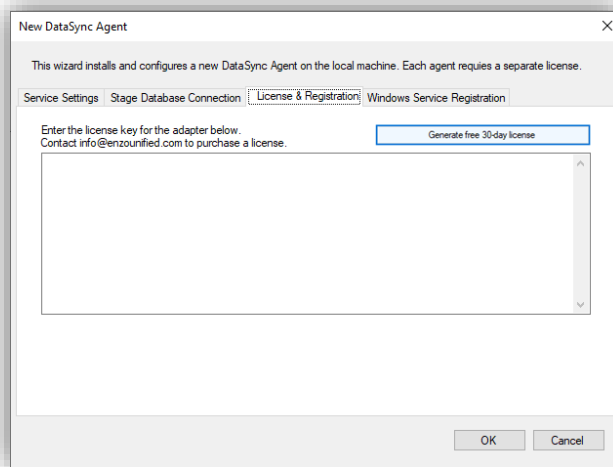
In the Stage Database Connection, click the build... link, and enter the database connection settings to a SQL Server database where the agent will store its staging data.

Database Server: The database server name and optionally the instance name to connect to

Authentication: Database credentials to use (use Windows Authentication if possible)

Database Name: Enter the name of a database to create (it will be created later automatically if needed)

Click OK to close the Database Connection screen and fill out the connection string.



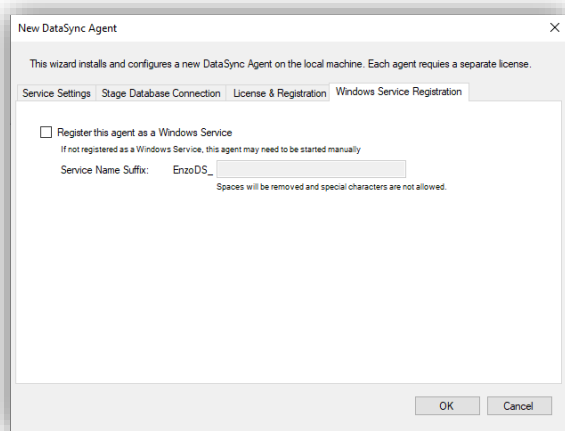
On the License & Registration tab, click on the **Generate a free 30-day License** button. Another screen will appear asking you to fill out your email, name and other details.

Once you have entered this information, a 30-day Enterprise evaluation license key will be generated and filled out automatically on this screen.

NOTE: An email will be sent to the email address provided with a copy of your license key.

NOTE: If you have purchased a license key, you can paste it here.

To purchase a license, please contact support@enzounified.com.



In the Windows Service Registration tab, check the **Register this agent as a Windows Service**. This setting is optional; however, if this agent is not registered as a service, it will not start automatically when the machine restarts. To start the agent manually, simply run the **EnzoDS.exe** file in the directory where the agent was installed.

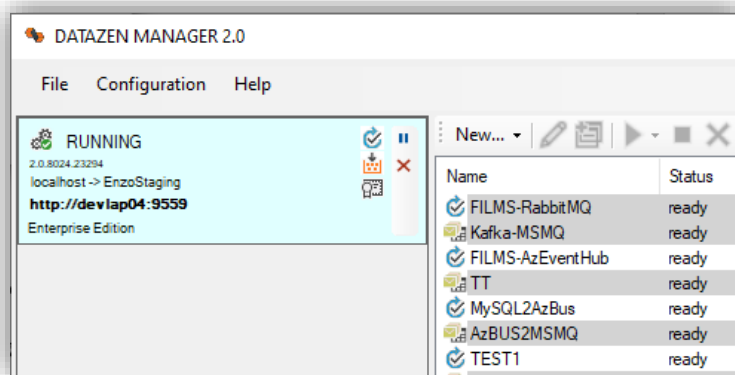
Service Name Suffix: Enter a suffix for the windows service name.

Once all the information has been filled out, click OK to install the agent. This operation may take a few minutes.

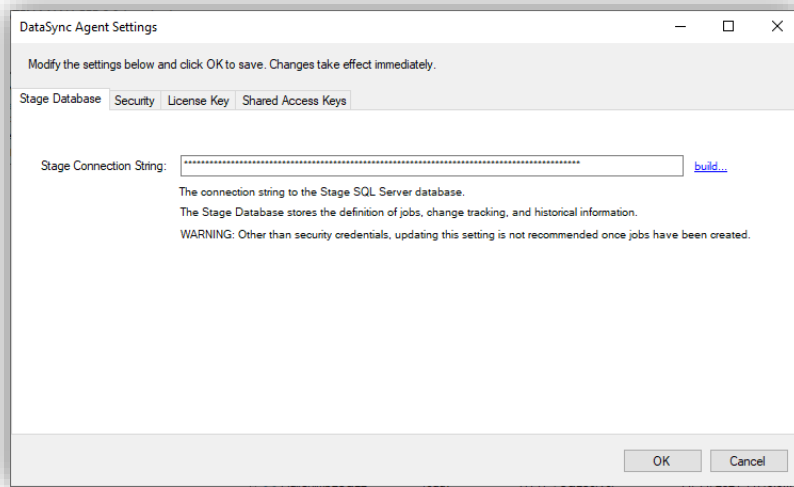
Installing new agents requires administrative privileges; it is recommended to run the DataZen Manager as an Administrator to ensure a successful installation.

Reconfigure an Existing Agent

If you would like to edit the configuration of an existing agent, such as changing the connection settings or the license key, or to further secure access to the agent, follow these steps.



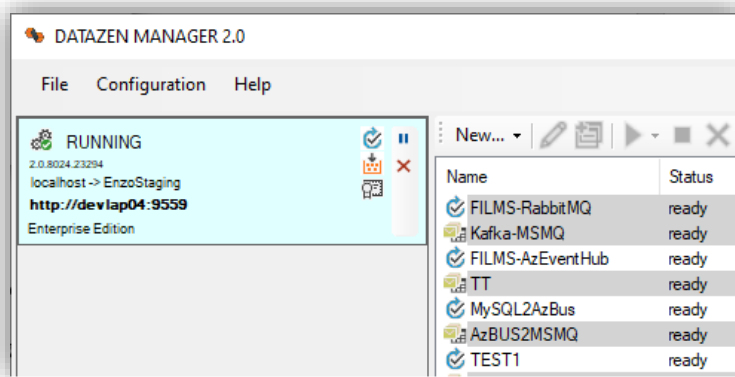
Select the agent to reconfigure, and choose **Configuration -> Agent Settings...**



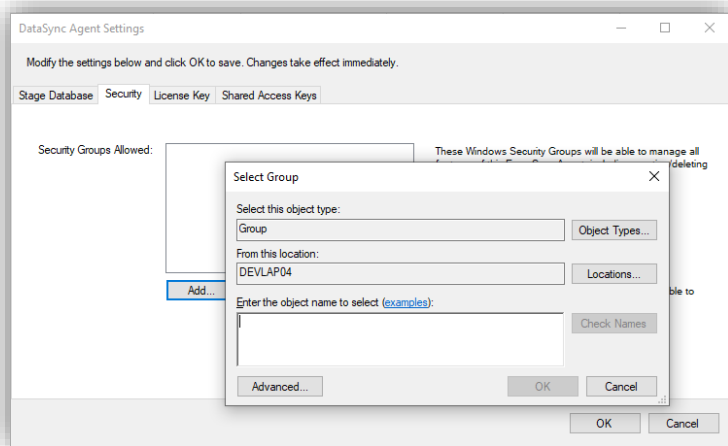
This screen allows you to change/edit the connection string to the Stage database, change security settings, and change the license key.

Modify Security Settings (RBAC)

DataZen Manager allows you to modify default security settings when using a paid license (the trial edition does not allow changing security settings). As an administrator, you can control which Windows Security Groups can view and manage DataZen Agents. Each agent can have different security settings.



Select the agent to reconfigure, and choose **Configuration -> Agent Settings...**



From the Security tab, click the **Add...** button to add the desired security groups.

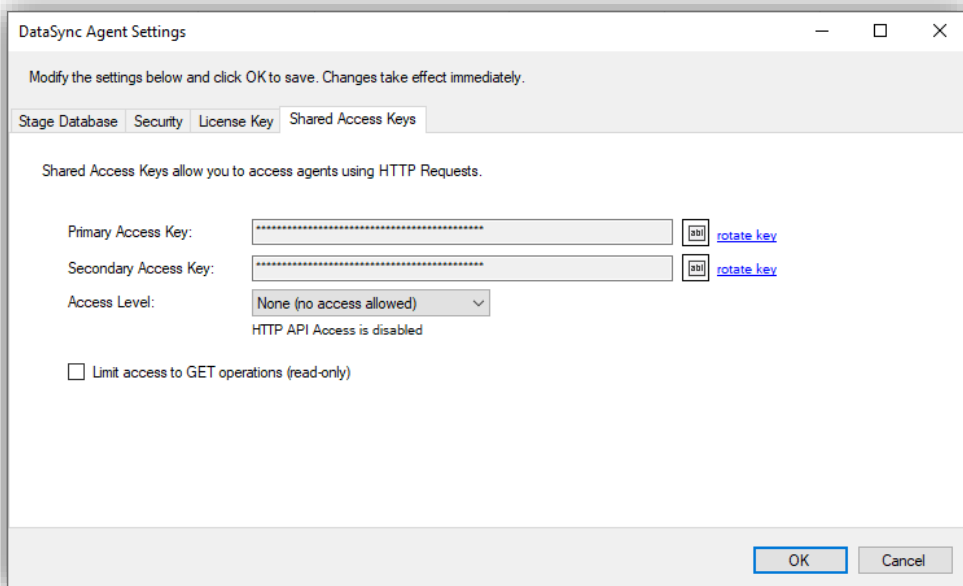
Click OK to save changes. The new security settings take effect immediately.

By default, members of the **NT AUTHORITY\Authenticated Users** can administer agents. In addition, even if not specifically listed, members of the BUILTIN\Administrators group can administer agents.

Enabling DataZen REST API Access

You may enable access to DataZen's internal REST API. This API is used by the manager directly, so you may perform almost any function the manager can perform, with the exception of reading/creating connection strings and licensing related operations.

By default, access to the REST API of DataZen is disabled. You can limit access to the Jobs API, the Agent API, or both. In addition, you can limit access to GET operations only.



Configuring Default Paths

Before creating jobs, it is best to configure default paths for the agent. These default settings will be used when creating new jobs:

- **Default Sync File Path**
The path where Sync Files will be stored on the local machine where the agent is running.
- **Default PGP Path:**
The path where PGP Encryption files are located so Sync Files can be encrypted and decrypted.
- **Default DQL Path:**
The Dead Letter Queue path where Sync Files will be moved to when they fail to be pushed to a target system.

